

# TARHEEL TS



Volume XVIII Issue VI

AUG, 2020

Published by the Tarheel Ts  
The Model T Club of the  
Piedmont

STILL MOVIN'  
ALONG...



## IN THIS ISSUE

THAT'S NOT GOOD.. 3

MY CAR WAS BORN  
IN .... 3

HOW ABOUT THAT? 4

GOOD IDEA 4

WHAT IS IT? 4

CALENDAR 5

THE TARHEEL Ts is  
chartered as a chapter in  
both major MODEL T clubs.



## STEPPING UP AND STEPPING OUT....

Club Secretary Craig Coleman stepped up this summer to work to coordinate a number of tours for those interested in making some summer runs. He set up tours with Charlie Causey, Philip Thompson, Ike Apple and Don Ellis to give us the opportunity to travel to interesting, uncongested areas and enjoy the hobby during a time of most things being cancelled or closed. Their effort will be one of the few fond memories we will have of what has been the most miserable years many can remember.

Craig provided this report on the latest tour:

-0-

Once again, the Tarheel Ts took to the back roads of rural North Carolina. A group of eight cars ranging from 1911 to 1927 departed Mount Hope Fire House on Saturday 19 September for another enjoyable tour. The temperatures remained in the 60's throughout the sunny day, which helped keep the girls running cool. (I am referring to the cars in this case).

After traveling 14 miles through the lush green countryside, the group stopped at Cedarrock Park to socialize, enjoy a picnic lunch and take a short hike. During our stay a 1.4 mile excursion was rewarded with the viewing of the mill pond falls and the very old cedar trees that have been growing in this area

since being planted long ago. At the conclusion of our park visit, filled with food we enjoyed and conversation that was even better, we rounded up our group and were off for the second leg of our journey. Don and his



trusted navigator, Janet, once again led our group off into the back country with a destination in mind. The second stop of the day was at the Homeland Creamery where we enjoyed fresh ice cream as a top off to our earlier meal. At the dairy we were able to interact with another club, out to enjoy the day in their model A's and vintage 60's rides. It was soon time to proceed on with the final leg of our tour and leaving behind many car people wishing they too owned a

T. As the day passed we once again found ourselves at the firehouse to load up and close out yet another tour.

In total our trip covered 32 miles but the experience was one to remember. This trip traveling through the beautiful countryside enjoying our hobby and friends really makes the effort of keeping these old girls together well worth the time. As mother nature is turning down the thermostat we are soon to close out this year's touring season, that is not



to say if a member comes up with a good idea for a tour, it could happen!

[Treasurer's Report 2018](#)

BALANCE  
**\$1017.00**

**ALL THE  
TARHEEL TS  
NEWSLETTERS  
NOW  
AVAILABLE ON CD**



Missed a newsletter?

Want to get to an old article?

Joined recently?

The club has put together a collection of all the newsletters from Edition I through December 2015

The CD not only contains all the newsletters, but is easy to search for any article or any picture ever published.

The **FIRST PURCHASE IS \$10.00**, with each successive **annual update** only \$5.00. Each update will contain all the editions plus the just completed year.

You can order simply by sending an email to the club:

[tarheelts@tarheelts.com](mailto:tarheelts@tarheelts.com)

# **SUPPORT WORKS BOTH WAYS....**

*The companies below have given support to our club and the hobby.  
Keep that in mind when looking for Model T services.*

**"ONE MILE AHEAD"**  
*Smith and Jones*  
**Antique Auto Parts**  
60 Wisconsin St., W. Columbia, SC 29170  
803/822-4141 FAX 803/822-8477

Quality Parts  
Same Day Shipping  
Established 1972  
142 Page Catalog  
Order Desk 800-422-1928

[www.snjparts.com/](http://www.snjparts.com/)

12/20

Clincher Rims available

**FREE Catalog**

# LUCAS CLASSIC TIRES

**BEST PRICES ANYWHERE!**  
2850 Temple Ave., Long Beach, CA 90806  
**1-800-952-4333 • 562-595-6721**  
[www.LucasClassicTires.com](http://www.LucasClassicTires.com)

Wards  
Riverside  
30x3-1/2

12/20



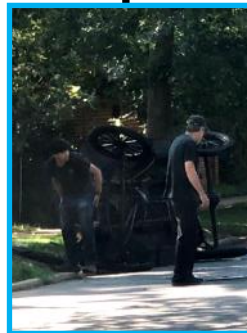
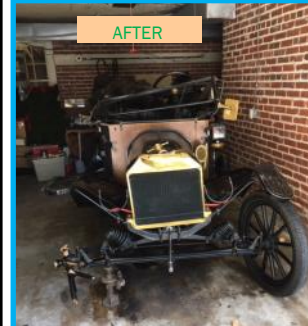
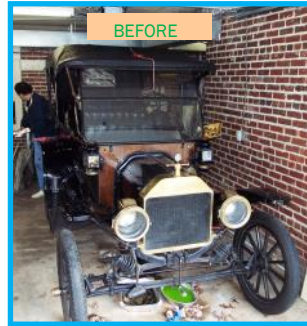
### HOW ABOUT THAT!!

In 1918 a young man named Walter Jacobs bought 12 Model Ts. He believed that with Americans beginning to drive cars perhaps they would like to rent them. By 1923 he was buying 600 cars for his company. He sold the firm to John Hertz who changed the name which became an iconic brand. In 1987 Ford owned the company which by 2005 represented 10% of Ford's pre-tax profits. It then sold Hertz to a consortium. So, a young fellow with an idea and a dozen Ts created a company and an entirely new business category.

When Jacobs came up with the idea and bought the Ts, he himself couldn't drive.

It was meant to be just a nice run around the neighborhood but ended up going no further than the end of Cristopher Atala's driveway.

He had noticed a crack in one of the spokes but it didn't look all that serious. However, when making a right turn onto the highway — he heard a "snap" and found himself in the grass



and the T on it's side. The spoke had

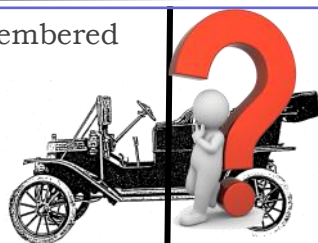
snapped and took the rest with it in one rotation as Christopher was accelerating.

Fortunately it occurred at a location and speed that allowed him to not suffer significant injury, but the car is going to need some TLC this winter.

When he puts his plan together we will let everyone know.

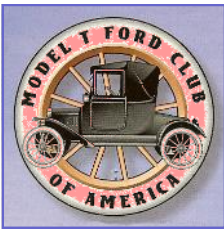
### Hmmm. WONDER WHAT WAS.....

This is a year which will be remembered but what about the year your car first hit the road? What was going on as your shiny new T was moving around for the first time? As the winter comes and we now seem to have more time to ponder otherwise seemingly unimportant items, it is



easy and interesting to find out what world awaited you car.

There is a website named [INFOPLEASE](http://INFOPLEASE) which allows you to select a year and get a rundown on the major events of a year. While there check your birth year and other items as well.



# JOIN NOW AND GET ANSWERS



## GOOD IDEA.....

We have received a reminder of how important it is to closely inspect your spokes. We have had instances where the spokes appeared perfectly sound but were rotting in places covered with paint. If they are loose enough to move with your hand, they



are heading toward needing replacement soon. And if one breaks at speed, the results can be harmful at best.

They are expensive and it is easy to assume that they worked last time .....

But if they fail the expenses can be much higher.



*What is it ?*

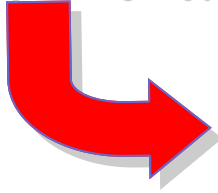


*ANSWER*

This is the setup which is used to get the new spokes back in the rim. Without a device like this trying to get them mounted properly is ..just about impossible. The club owns such a device and if you decided you need yours

replaced, let us know through the website "Question" button or through our email. It requires some instruction but it takes a nearly impossible job and makes it merely a struggle. You can see how one works [HERE](#).

# Next Event!



**Officers**  
 Pres. Don Ellis  
 V.P. Tim Gray  
 Tres. Phil Brooks  
 Secty Craig Coleman

**Board of Directors**  
 Philip Thompson (3)  
 Bill Aber (2)  
 Charlie Causey (1)

**CLUB EMAIL ADDRESS:**  
[tarheelts@tarheelts.com](mailto:tarheelts@tarheelts.com)

## EVENTS 2020

NOTE: **TBD** indicates the time, gathering location or other details remain unconfirmed

|        |   |
|--------|---|
| JAN    | New Year Party  |
| FEB    | BOARD MEETING   |
| MAR 1  | BABBIT PREP TECH SESSION 1PM<br>7550 Mcbane Mill Rd Graham NC 27253 |
| MAR 28 | CHATAM CO. AGRIC.SHOW<br>SPE F.D. 10                                |
| APR 18 | REC...<br>RD... OF...<br>D CH... ax, NC                             |
| MAY 16 | TEAM... HOUR<br>MT... M   |
| JUN 13 | TOUR...<br>7550 MCBA... MI... GRA... 253                            |
| JUL    | "NORT... TO<br>Re...  |
| SEP 5  | HOPE TO...<br>PE F.D. 10 am   |
| OCT    | TBD   |
| NOV    | TBD   |
| DEC    | TBD   |